

Park Planning:

A Design Process Summary



*Landmark
Design
Group*
Inc.

Land Architecture
Environmental Planning
Site Engineering



Habitat Park: What, Why, & How

_____a summary_____

Introduction:

- Habitat Park will be an exciting new addition to the County’s prevailing mix of recreation facilities. It is the product of the communities interest in creating access to valued river recreation, the expansion of the river trails system, and informal recreation amenities that complement the resource setting. It is but one of several “access parks” planned for the river trails system corridor.

Program:

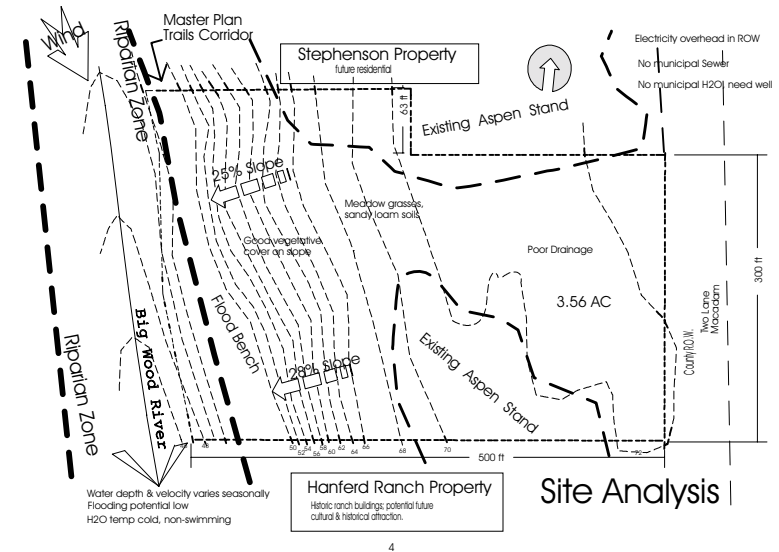
- Provide a park setting that allows for users to access the river trails system corridor while providing a balanced mix of amenities that complement the site setting and the needs of users. Provide for informal recreation activity and resource enjoyment that can be used all four seasons.

Design Guidelines:

- Provide a park design compatible with current public health & safety code requirements; “ADA” accessibility requirements; County park standards; create compatible design relationships with site conditions and adjacent natural resources. Design elements should reflect the cultural / historical legacy of the area and input from community park planning workshops. The facility design shall be durable, maintainable, and respect the development budget.

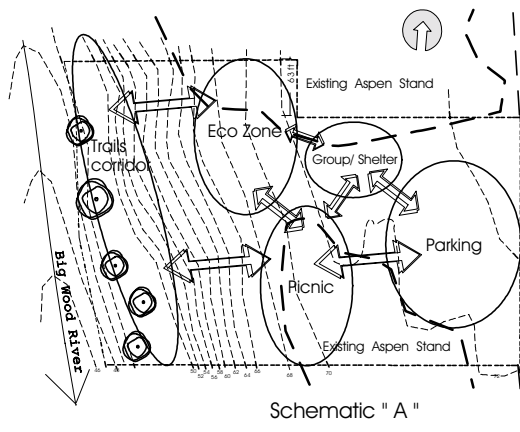
Site Analysis:

- The analysis of the site involves study of existing natural resources, cultural/historical artifacts, adjacent land-use patterns, and general site opportunities and constraints that will have importance to the design of the facility. The adjacent graphic plan notes some of the considerations important to the design of Habitat Park.

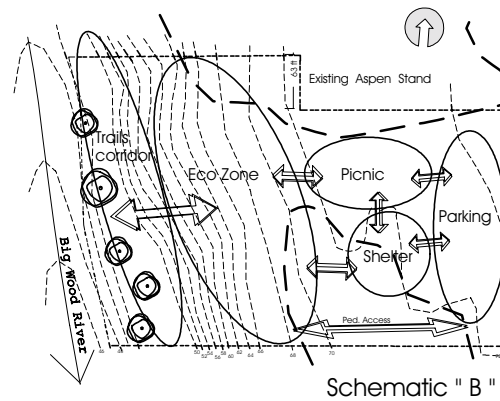


Concept Plans:

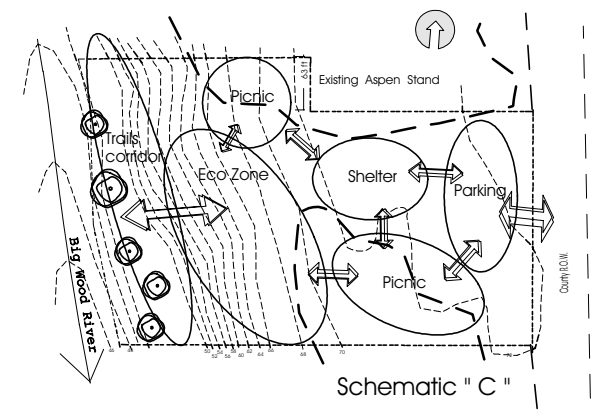
- Concept plans synthesize the design program with the site analysis. They show alternative arrangements of the activity areas needed for the park site to perform the recreation activities identified in the design program, or design directive. The Schematics A, B, & C, below show alternative locations, sizes, and functional relationships of the Habitat Park program elements.



5



6

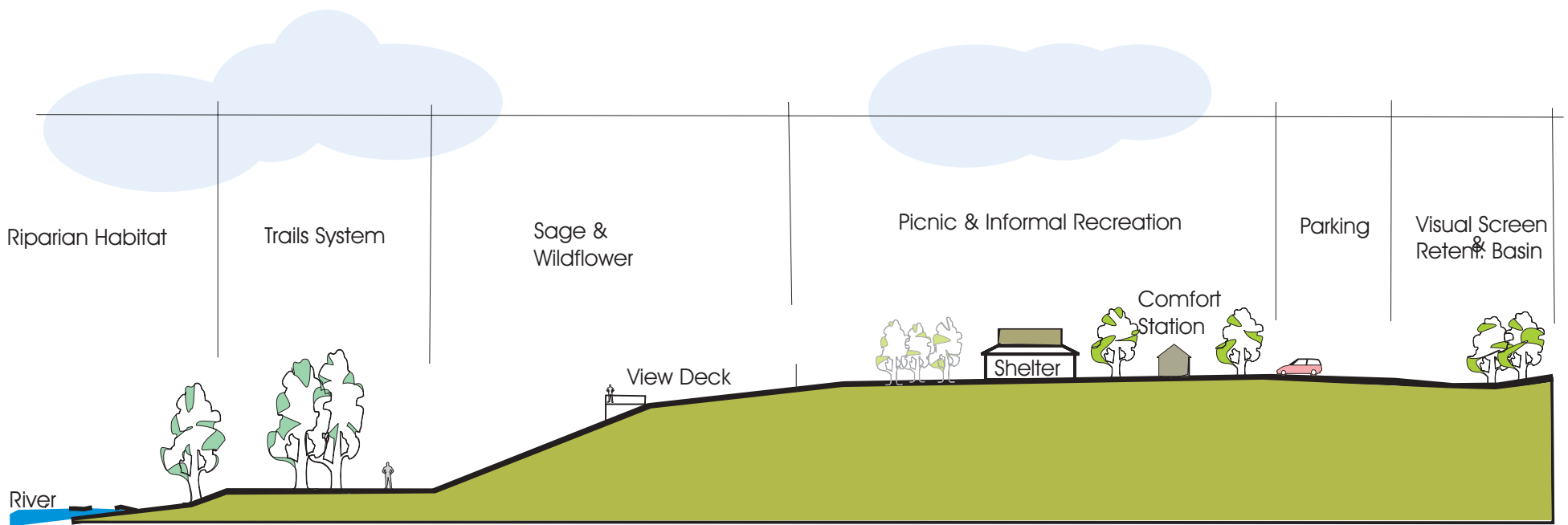


7

Development Plan:

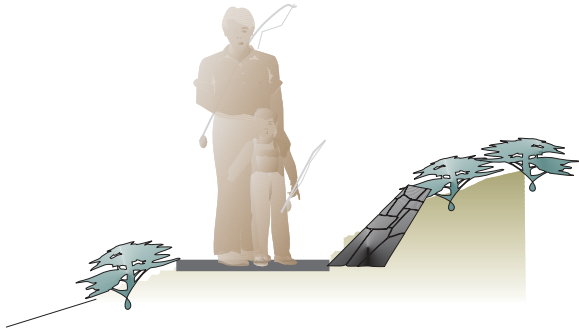
- The Development Plan results from the evaluation of the concept plans. The selected plan may contain the best design arrangements and concepts from one or several of the preliminary concept plans. The Illustrative Site Plan shown below is the selected plan for Habitat Park. It shows the detailed location, size, and shape of specific design elements that meet the program needs while taking advantage of site opportunities.



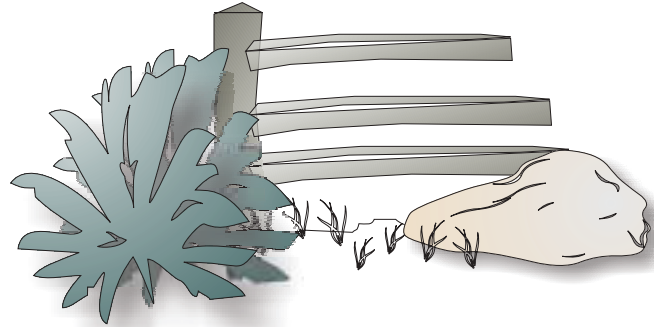


Habitat Park Site Profile

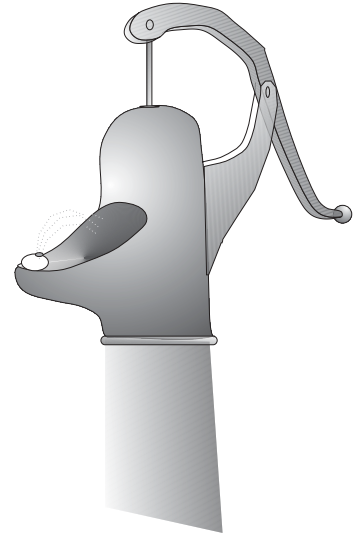
Design Elements



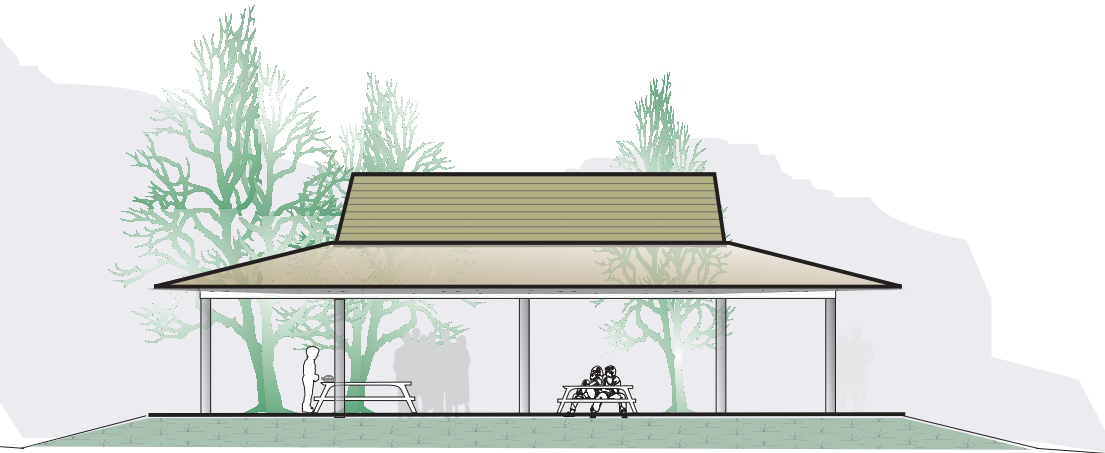
Trail Section
&
Slope Protection



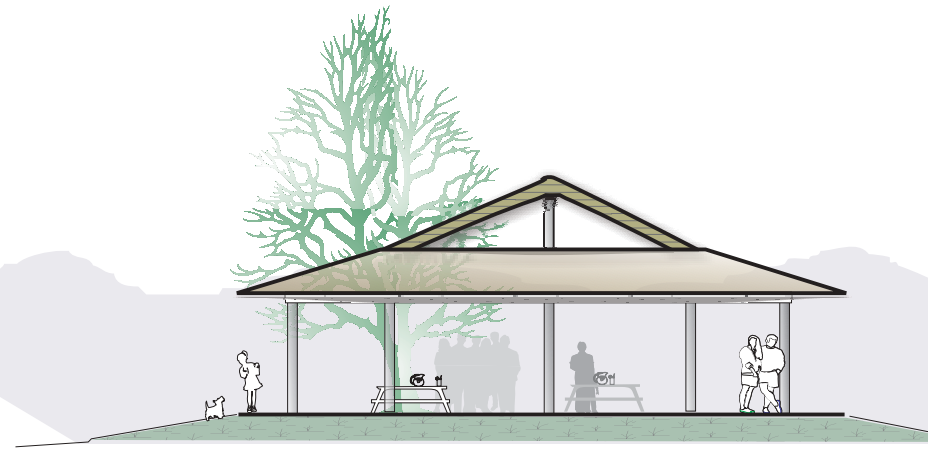
Split -Rail Fence



Water Fountain



East Elevation



South Elevation

Park Shelter